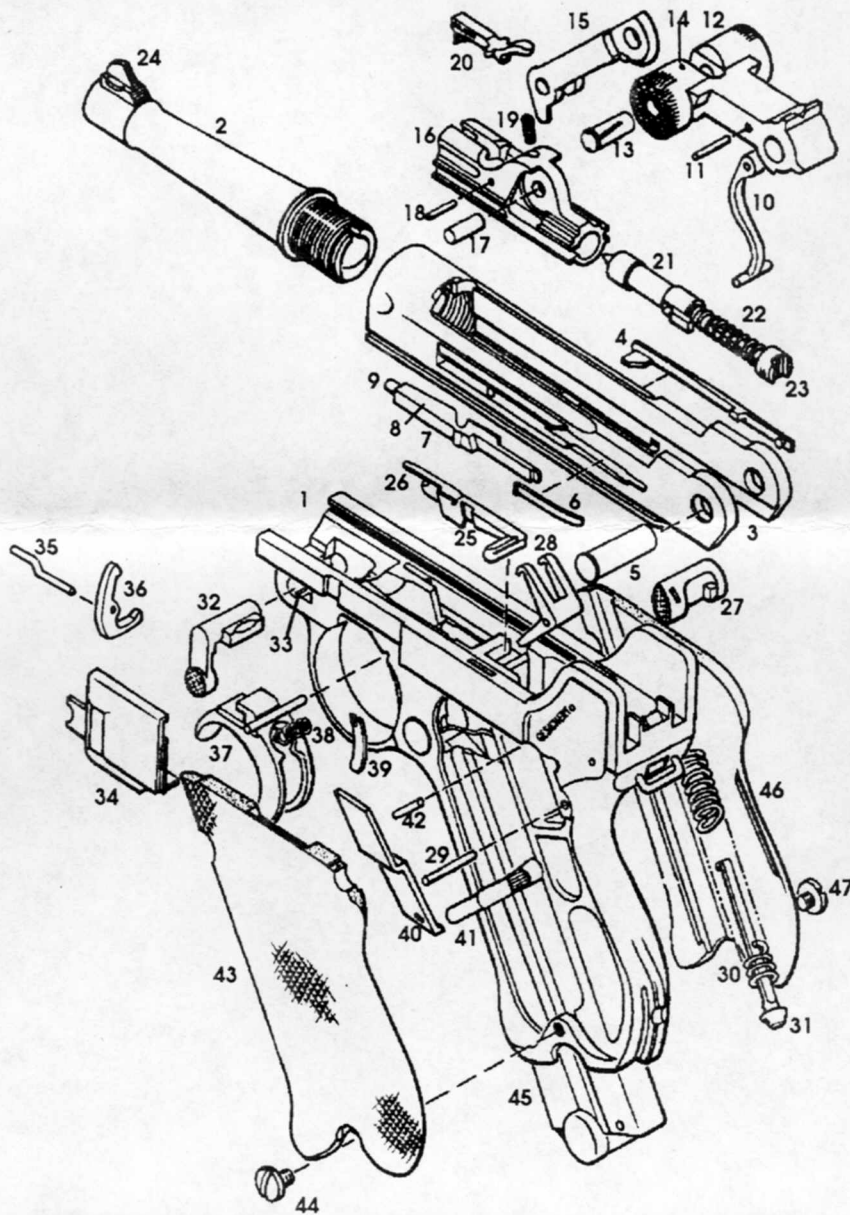


Luger Parabellum



WARNING:

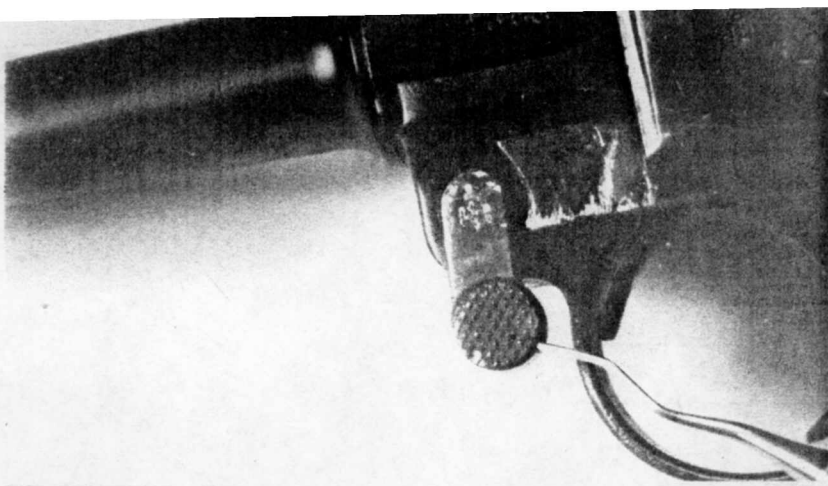
Make sure the gun is entirely unloaded before starting the disassembly; visually check some rounds can hide.

Read every instruction carefully using the picture only as a reference.

- 1 Frame
- 2 Barrel
- 3 Receiver
- 4 Ejector
- 5 Receiver Axle
- 6 Trigger Bar Spring
- 7 Trigger Bar
- 8 Trigger Bar Plunger Pin
- 9 Trigger Bar Plunger (spring not shown)
- 10 Coupling Link
- 11 Coupling Link Pin
- 12 Rear Toggle Link
- 13 Toggle Axle
- 14 Toggle Axle Pin
- 15 Forward Toggle Link
- 16 Breechblock
- 17 Breechblock Pin
- 18 Extractor Pin
- 19 Extractor Spring
- 20 Extractor
- 21 Firing Pin
- 22 Firing Pin Spring
- 23 Firing Pin Spring Guide

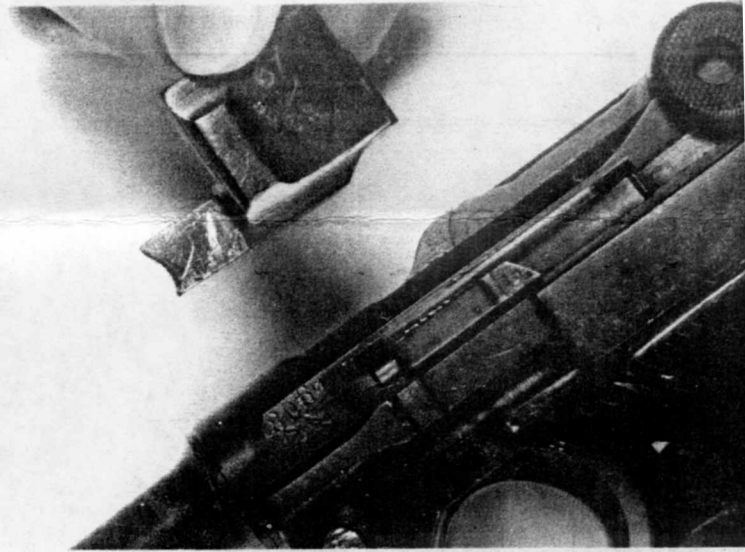
- 24 Front Sight
- 25 Hold Open Latch
- 26 Hold Open Latch Spring
- 27 Magazine Catch
- 28 Recoil Lever
- 29 Recoil Lever Pin
- 30 Mainspring
- 31 Mainspring Guide
- 32 Locking Bolt
- 33 Locking Bolt Spring
- 34 Trigger Plate(sideplate)
- 35 Trigger Lever Pin
- 36 Trigger Lever
- 37 Trigger
- 38 Trigger Spring
- 39 Magazine Catch Spring
- 40 Safety Bar
- 41 Safety Catch
- 42 Safety Pin
- 43 Grip, Left
- 44 Grip Screw, Left
- 45 Magazine
- 46 Grip, Right
- 47 Grip Screw, Right

RADOCY
1 800 356 4759



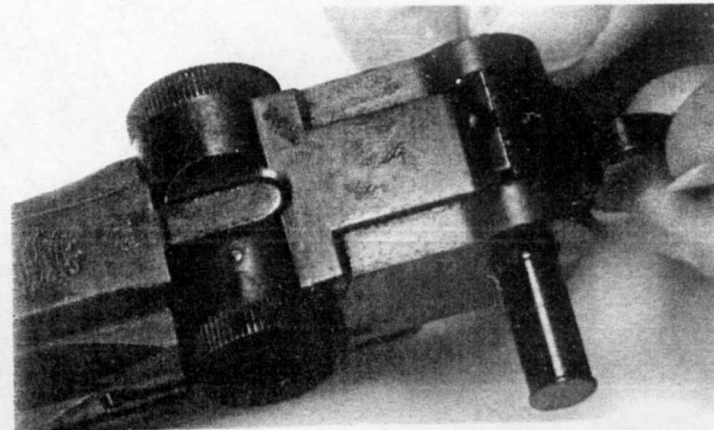
1. Push the barrel and bolt assembly toward the rear until the toggle knobs touch the ears at the rear of the frame, and turn the takedown lever on the front left of the frame down to the vertical position.

2. Keep the barrel and bolt assembly in the same position, lift the sideplate out from the engagement in trigger and move it forward to free the rear flange. Then remove it from the frame.

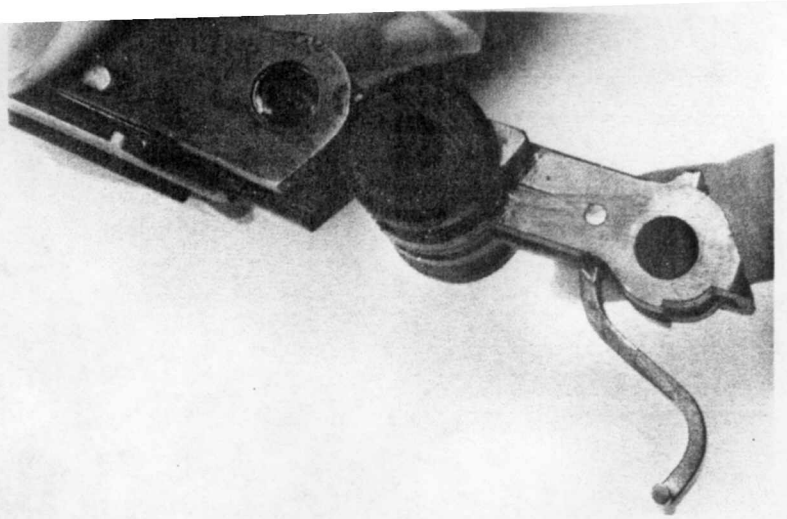


3. Remove the barrel and bolt assembly forward off the frame.

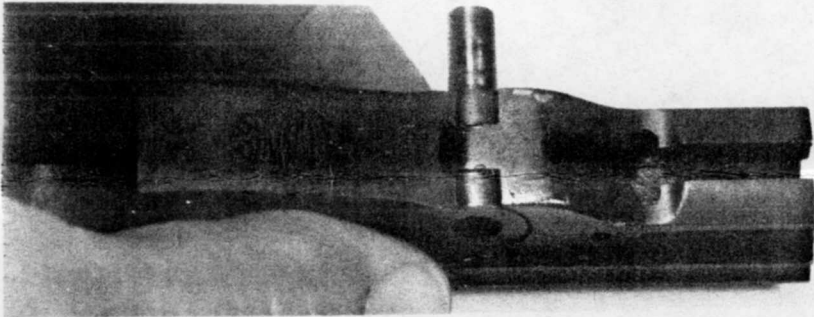
4. Remove the large cross pin at the rear of the barrel extension.



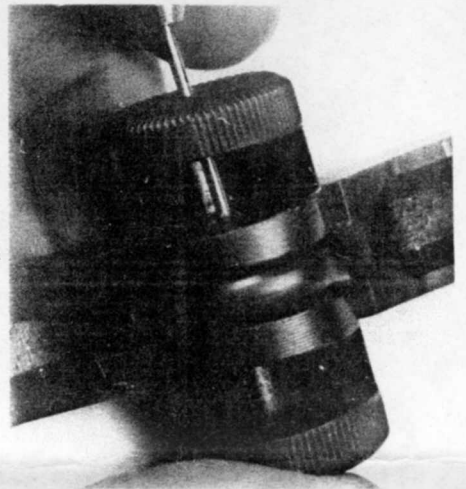
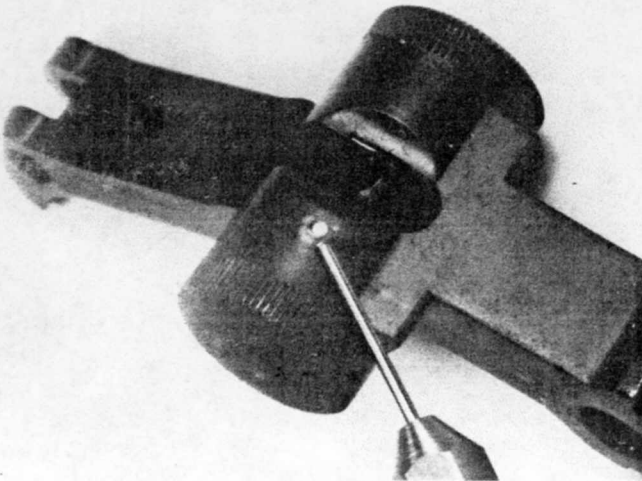
Slide the breech block and toggle assembly out of the rear of the barrel extension. The gun is now field stripped.



6. Remove the front cross pin of the toggle assembly to free the breech block for removal. **Note:** In some cases, this pin will be very tight. Do not force it as this could cause deformation or breakage of parts.



7. On top of the toggle knob piece, on the left side, a small pin is visible. This must be driven up, from the underside of the toggle, to free the large center pin of the toggle assembly. The large pin is then pushed out to the left.



8. Drifting out the small cross pin in the breech block will release the extractor and its spring for removal.

